

# MICRO MOTORIDUTTORI BRUSHLESS EPICICLOIDALI MICRO BRUSHLESS PLANETARY GEARMOTORS

PM32LN con motore brushless

PM32LN with brushless motor



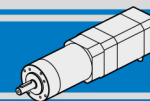
PM32LN								BL002.240 / BL002.240-IE			
Ns	in	ir	M <sub>2</sub> [Nm]	Rd	R <sub>2</sub> [N]	A <sub>2</sub> [N]	Kg	Coppia nominale - 24V Rated torque - 24V		Coppia massima - 24V Peak torque - 24V	
								[ Nm ]	[ rpm ]	[ Nm ]	[ rpm ]
1	5	<b>5.18</b>	0.75	0.8	40	10	0.16	0.15	988	0.30	988
2	19	<b>19.2</b>	2.3	0.75	70	20	0.21	0.53	267	1.06	267
	27	<b>26.85</b>						0.75	191	1.50	191
3	71	<b>71.16</b>	4.5	0.7	100	30	0.26	1.84	72	3.68	72
	139	<b>139.13</b>						3.60	37	7.20	37
4	369	<b>368.76</b>	4.5	0.65	130	40	0.31	8.87	14	17.74	14
	721	<b>720.98</b>						17.34	7	34.68	7

**Nota:** le caselle in colore grigio indicano il superamento della coppia massima sopportata dal riduttore per il servizio in S1.  
Per vedere tutti i rapporti di riduzione disponibili, vedere tabella a pag. E3

**N.B.:** boxes in grey indicate that maximum torque withstood by gear reducer for service in S1 is exceeded.  
See the table on page E3 for all available ratios.



**BL002 37 mNm  
24 V**

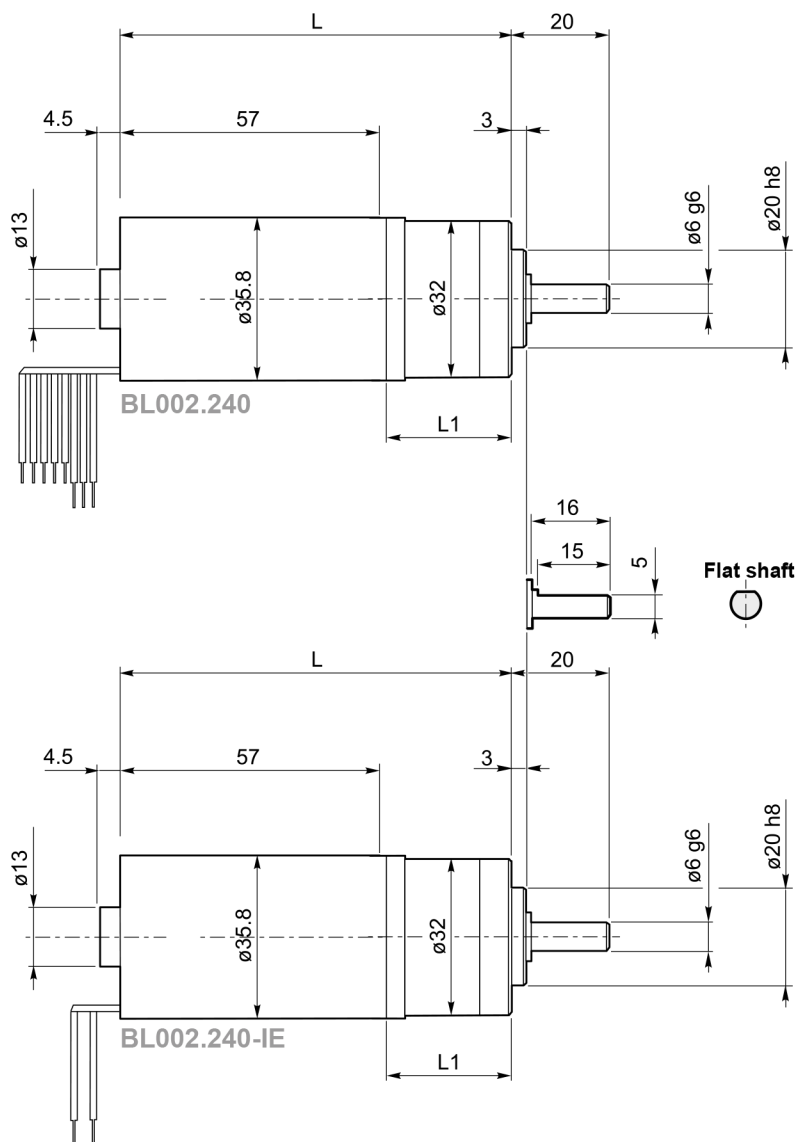
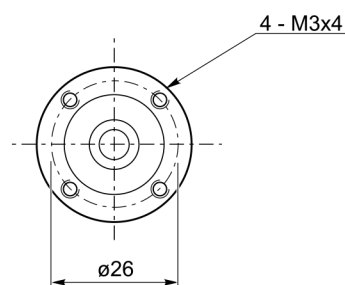


**PM32LN con motore brushless**

**PM32LN with brushless motor**

Tipo Type	Numero di fasi Number of phase	Tensione Rated voltage [ V ]	Numero di giri Rated speed [ rpm ]	Coppia nominale Rated torque [ mNm ]	Potenza nominale Rated power [ W ]
BL002.240	3	24	5120	37	19.8
BL002.240-IE	3	24	5120	37	19.8
Tipo Type	Coppia massima Peak torque [ mNm]	Corrente nominale Rated current [ A ]	Resistenza Resistance [ ohm ]	Corrente massima Peak current [ A ]	Peso Weight [ kg ]
BL002.240	74	1.1	2.8	1.9	0.25
BL002.240-IE	74	1.1	2.8	1.9	0.23

Azionamenti  
Drives



PM32LN	Ns	L1	BL002.240	
			L	
	1	28.5	85.5	
	2	38	95	
	3	47.5	104.5	
	4	57	114	